

Tested to the
global benchmark
in guardrail safety

bsi. PAS 13

Code of Practice for
Workplace Safety
Guardrails

Topple Guardrail

Designed to segregate pedestrians and protect them from the danger of toppling bulk goods, the Topple Guardrail is a robust solution that offers excellent levels of protection in multiple height variations.

This fully modular system can be tailored to suit both high and low-level storage areas, while the proven fork-impact protection of the ForkGuard is included as standard.

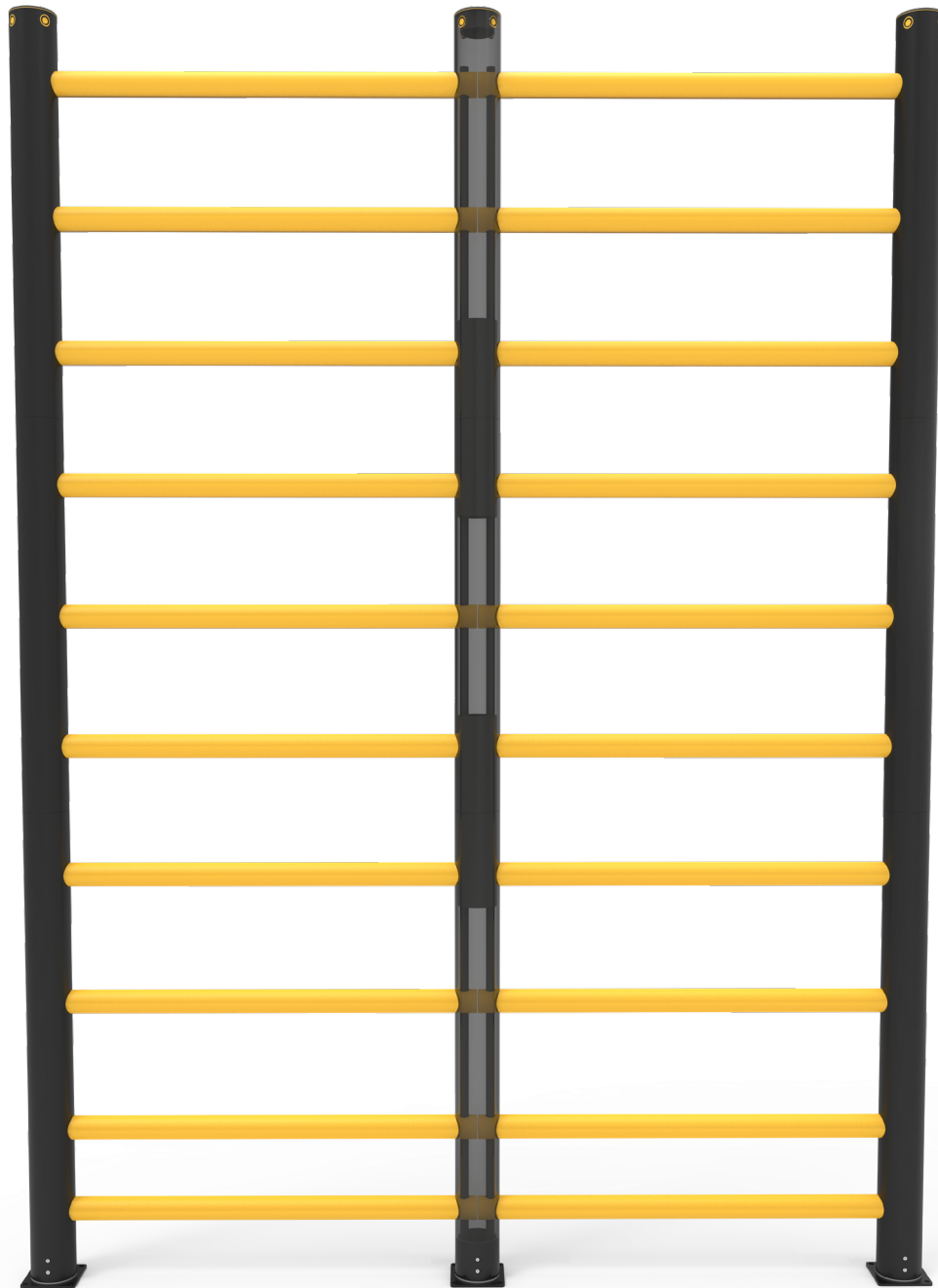


**BANKS
INDUSTRIAL
GROUP**

Your Authorized A-SAFE Distributor

856-687-2227 • sales@banksindustrial.com • BanksIndustrial.com

PO Box 382 • Berlin, NJ 08009



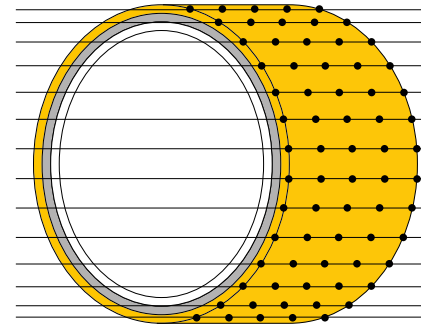
MEMAPLEX™

Ultimate strength polymer

created from an exclusive composition of the most sophisticated polyolefins and rubber additives, expertly blended for unequalled strength and flexibility.

Advanced Engineering Molecular

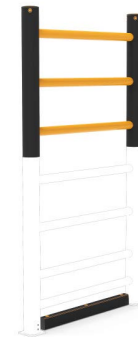
reorientation during manufacturing creates a unique built-in memory that enables the guardrail to fully recover following impacts.



Revolutionary 3-Layered Material

- Inner strengthening core
- Central impact absorption zone
- Outer UV stabilised colour layer

Configurations



Base + 3 Rails
Height - 141½ inches



Base + 6 Rails
Height - 208½ inches

Suitability

Application



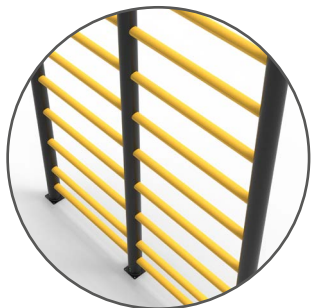
Suitable for
pedestrians



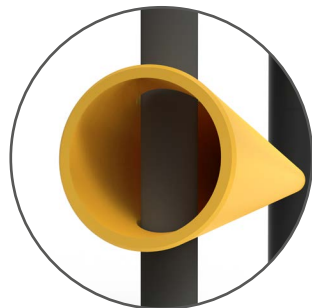
Unrivalled recovery through a unique built-in memory that allows the guardrail to flex, cushion and reform repeatedly upon impact, saving vast amounts in guardrail and vehicle repairs.

Huge return on investment from incident prevention and downtime avoidance as guardrails, vehicles, floors and equipment do not need replacing or repair.

Features and benefits



Ultra-low maintenance material is chemical and water resistant, non-corrosive, non-scratch and self coloured so no repainting, rusting, flaking or corrosion.



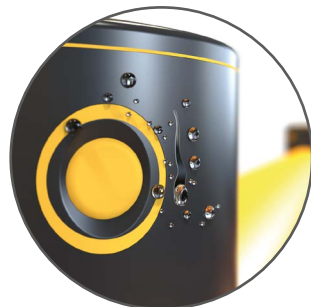
Exclusive modularity allows rails and posts to be replaced in-situ without removing adjacent guardrail sections.



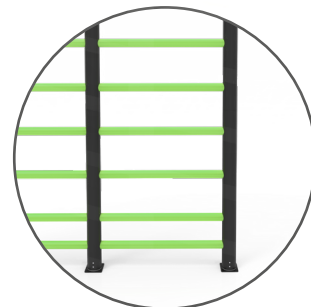
Self coloured and UV stabilised for continued visibility and long lasting aesthetics with no repainting.



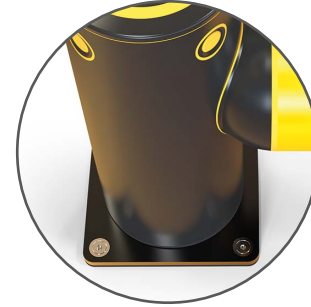
Ergonomic design with no sharp edges.



Wipe-clean, water resistant surface.



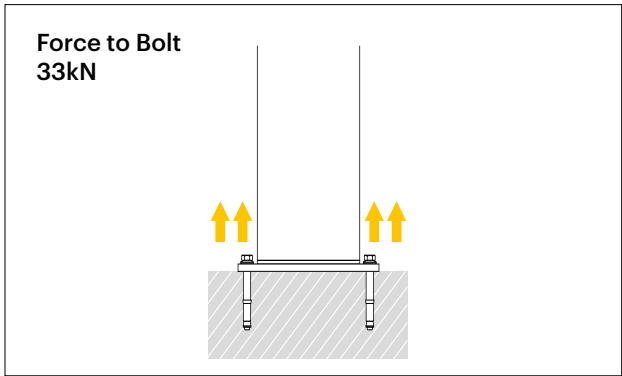
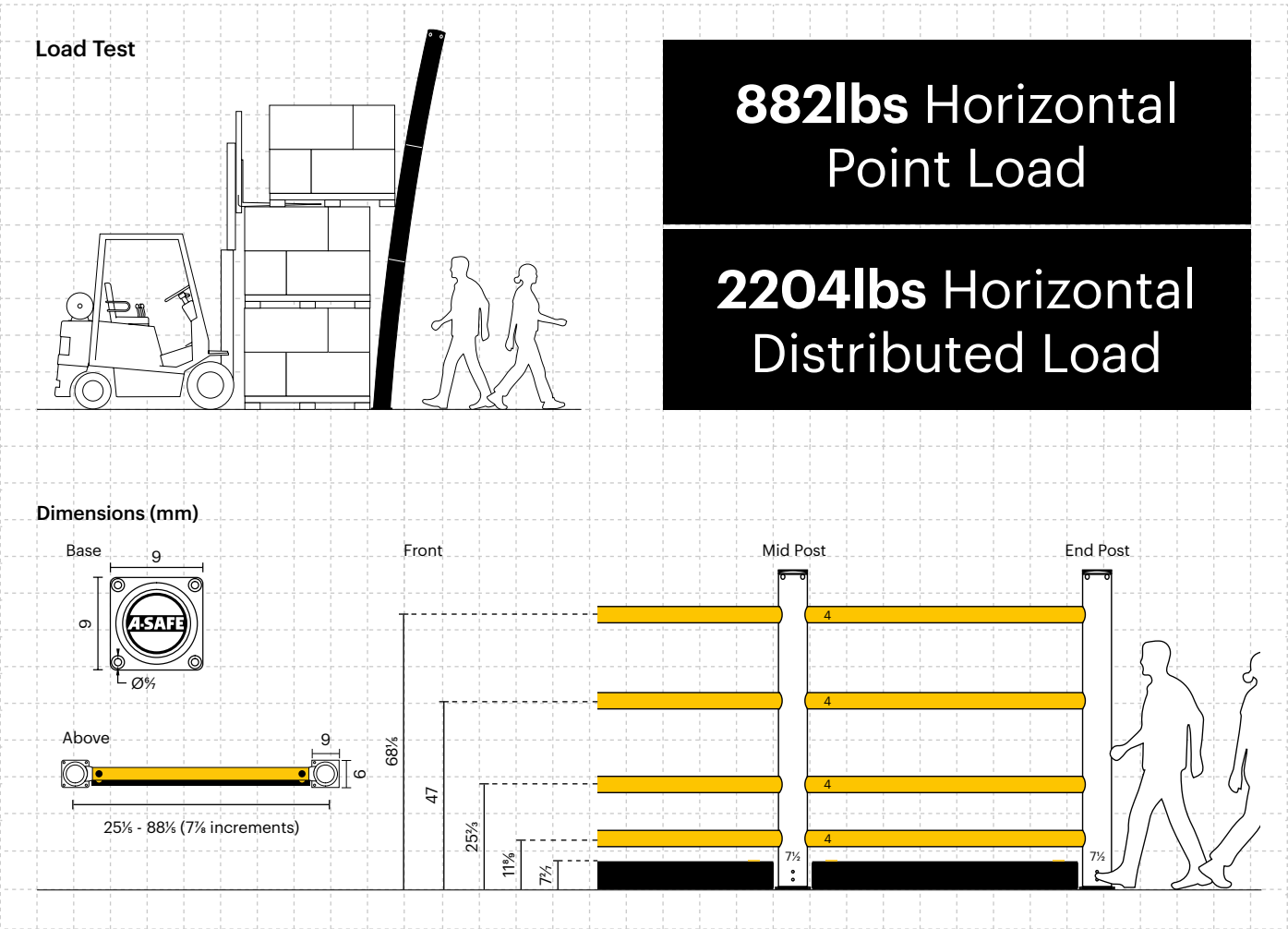
Environmentally friendly and 100% recyclable.



Zinc nickel, electrophoretic coating on base plates as standard, provides advanced protection against corrosion damage.



Technical Information



Impact Test	
End Post Max Energy (Joules) - 90°	6,900
Mid Post Max Energy (Joules) - 90°	6,900

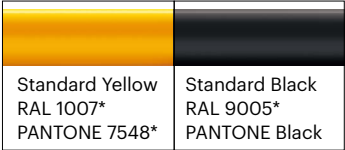
Material Properties	MEMAPLEX™
Temperature Range	14°F to 122°F
Ignition Temperature	698°F to 734°F
Flash Point	662°F to 698°F
Toxicity	Not Hazardous
Chemical Resistance	Excellent - ISO/TR 10358
Weathering Stability (Grey Scale)	5/5*
Light Stability (Blue Wool Scale)	7/8**
Static Rating (Surface Resistivity)	1015 - 1016 Ω

* Weathering scale 1 is very poor and 5 is excellent
** Light stability scale 1 is very poor and 8 is excellent

Post Options



Rail Options



Color Combinations

*Please note that the RAL and PANTONE colors listed are the closest match to standard A-SAFE colors, but may not be exact matches of the actual product color and should be used for guidance only.



Your Authorized A-SAFE Distributor
856-687-2227 • sales@banksindustrial.com • BanksIndustrial.com
PO Box 382 • Berlin, NJ 08009

